



KONICA MINOLTA

POWERFUL & PORTABLE

# SONIMAGE HS1



## Premium Point-of-Care Ultrasound

Sonimage HS1 is Konica Minolta's powerful and portable Ultrasound System for use in a variety of clinical environments. It is a true point-of-care system with an intuitive interface for easy operation in the most demanding situations.



Exceptional diagnostic power



Real ease of use



Focus on Musculoskeletal



Exceptional diagnostic power

Sonimage HS1 implements advanced technological solutions in the main platform and transducers, to deliver best-in-class image quality. The high performance of this compact ultrasound system gives you diagnostic confidence you normally only find using larger, cart-based systems.

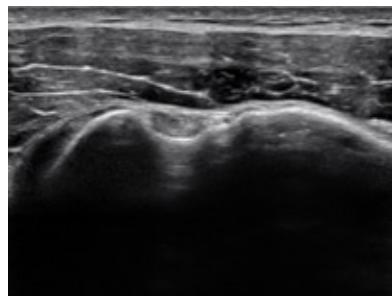
### Powerful Platform

- **3THI** Triad Tissued Harmonic Imaging, for enhanced image clarity

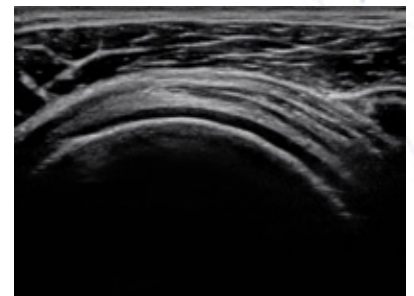


### Probe Technology

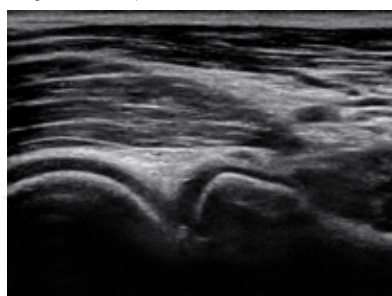
- **Ultra-Broadband Transducers**, for effective multifrequency imaging
- **Real 18 MHz**, high resolution imaging
- **Multi-layer Acoustic Integration Technology**



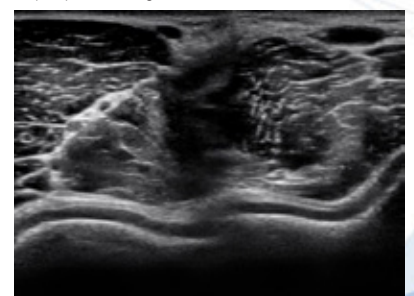
Long Head of Biceps Transversal



Supraspinatus Longitudinal



Radiohumeral Joint



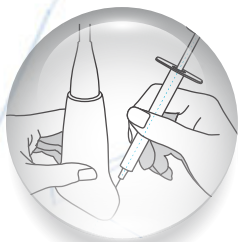
Humeral Capitellum and Trochlea



## Real ease of use

Operating Sonimage HS1 is really easy, due to its intuitive user interface which combines the advantage of the touch screen technology with a simplified console, with only 8 physical buttons and an integrated trackball.

Thanks to this innovative interface concept you will immediately feel confident with the system, accelerating the integration of the ultrasound imaging technology in your daily practice.

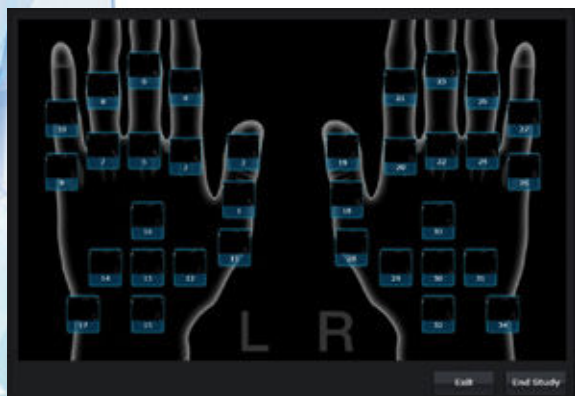
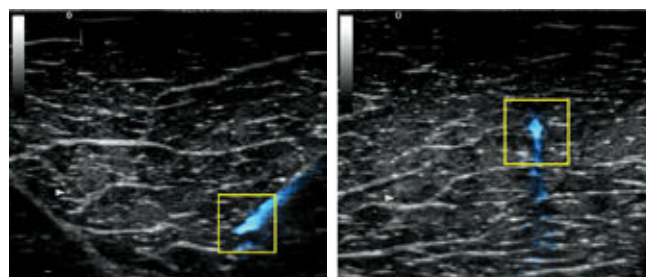


## Focus on Musculoskeletal

The added value of Sonimage HS1 in the field of Musculoskeletal imaging comes from its dedication. Sonimage HS1 provides innovative solutions dedicated to MSK specialists, like Orthopedists, Rheumatologists and Physicians in Rehabilitation and Physical Therapy.

### SNV - Simple Needle Visualization

- Dedicated solution for interventional procedures
- Enhances the needle on the ultrasound image, so you can see it more clearly
- Supports both in-plane and out-of-plane approaches
- Seeing the needle tip clearly enables safer and more efficient procedures



### Rheumatoid Arthritis Workflow

- Unique tool supports assessment of joints for Rheumatoid Arthritis
- Supports the examination through a dedicated protocol for Rheumatoid Arthritis
- Provides a quick and clear overview within the examined joints
- Customizable protocol to define the preferred acquisition order

Konica Minolta was established in 1873. We continuously innovate and create products and services that will bring real benefit to our customers' daily lives. Our healthcare portfolio contains Digital Flat Panel Detectors, Integrated and Retrofit X-ray rooms as well as CR, Laser Imagers, Medical Film and Ultrasound.



**KONICA MINOLTA**

### KONICA MINOLTA MEDICAL & GRAPHIC IMAGING EUROPE B.V.

Hoogoorddreef 9, 1101BA Amsterdam, the Netherlands

info-nl@mg.konicaminolta.eu - [www.konicaminolta.eu/healthcare](http://www.konicaminolta.eu/healthcare)